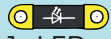


G10 FAST REFLEXES



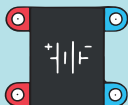
1x LED



1x resistor 1kΩ



1x display



1x battery



2x



1x



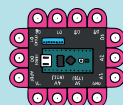
2x



1x



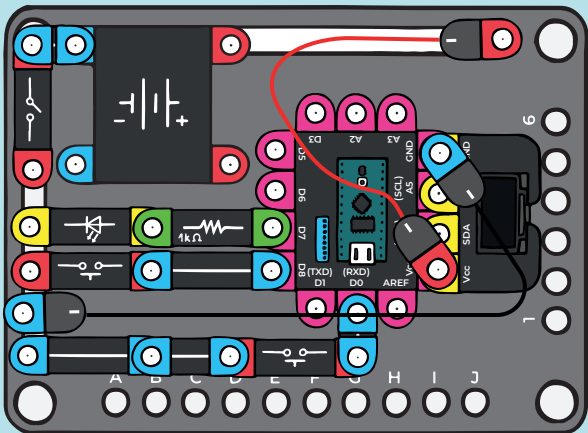
1x



1x micro computer

A circuit for measuring how fast your reflexes are (reaction times to an optical stimulus). It is a fun and yet a practical build. Before assembling the circuit as shown in Figure 1, first adjust the position of the changeover switches as shown in Figure 2. Press the lower button to start the measurement. Then wait for the LED to light up and as soon as it happens, press the button under the LED as quickly as possible. Your reaction time will appear on the display. This way you can compete with friends or test your own reaction time according to the time of day.

1.



2.

