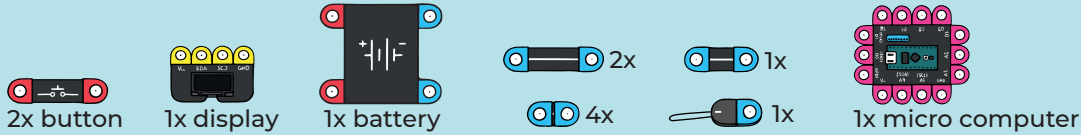
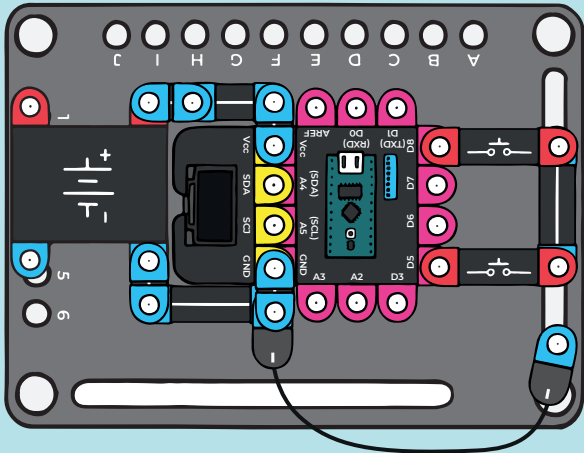


# G120 JUMPING WITH BOFFIN



Build a simple game console. You only have two buttons, but as usual, that is enough to control most funny games. Before assembling the circuit according to Figure 1, set the position of the changeover switches according to Figure 2. This game has been personally prepared for you by the Boffin figure, and your task is to bring the figure to the end of a thorny path along which you will run, having to jump over specific obstacles. I wish you good luck.

1.



2.

