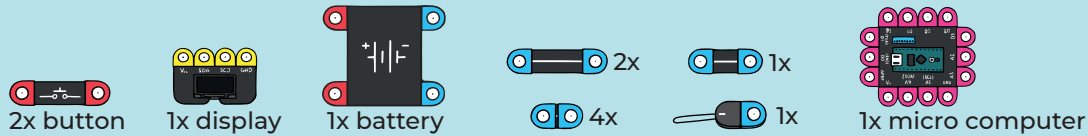
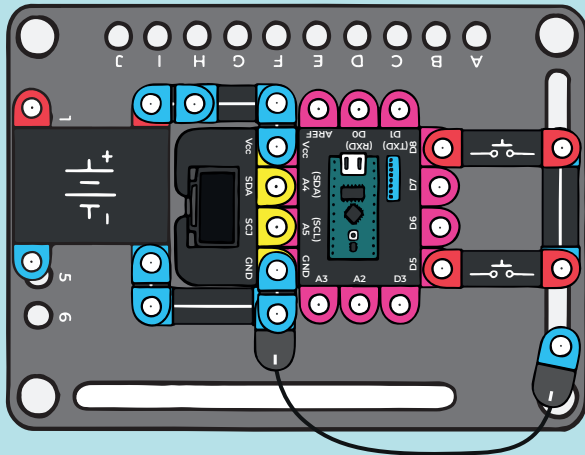


# G130 LOGIC GAME WITH BOFFIN



Build a simple game console. You only have two buttons, but as usual, that is enough to control most funny games. Before assembling the circuit according to Figure 1, set the position of the changeover switches according to Figure 2. This game is mainly about your knowledge. Boffin will ask you tricky questions and it is up to you how fast you answer them and how far you progress in this game.

1.



2.

