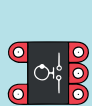


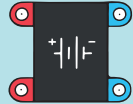
# G60 PING PONG SINGLE PLAYER



1x joystick



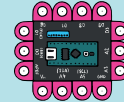
1x display



1x battery

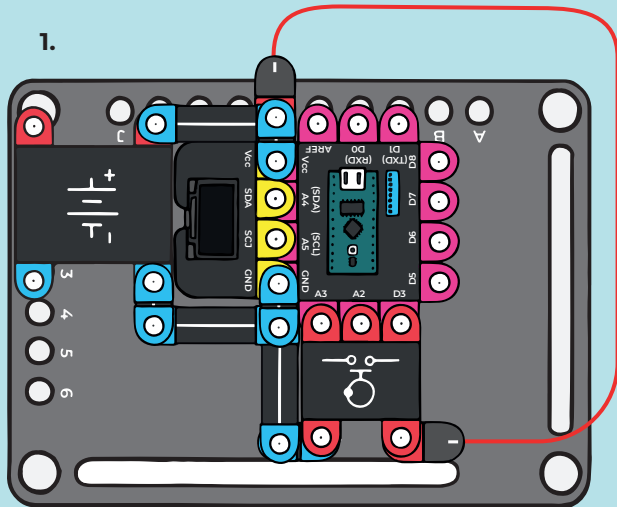


3x



1x micro computer

In the previous project, you learned how to build a game console with a joystick only. Because there is not always an opponent at hand, you can play against a micro computer that will be more than an equal opponent. Make sure to reset the changeover switches as shown in Figure 2.



2.

