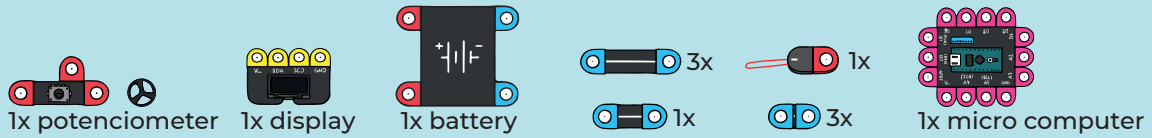
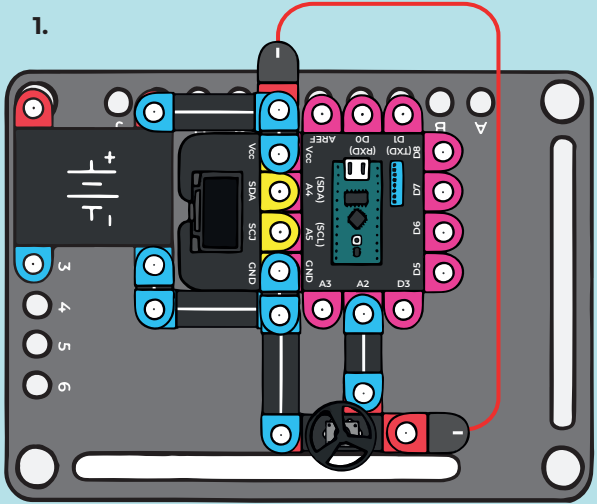


G90 RACING GAME I.



Build a racing simulator. You can steer using a potentiometer (it changes its internal resistance by turning and can thus be used for direct control) on which you place a plastic steering wheel. Before assembling the circuit according to Figure 1, set the position of the changeover switches according to Figure 2. Now there is nothing stopping you from taking up on the role of a Formula 1 pilot.

1.



2.

