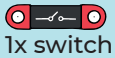
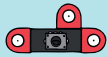


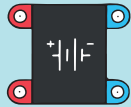
L220 SMOOTH BRIGHTNESS CHANGE II.



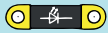
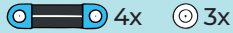
1x switch



1x potentiometer



1x battery



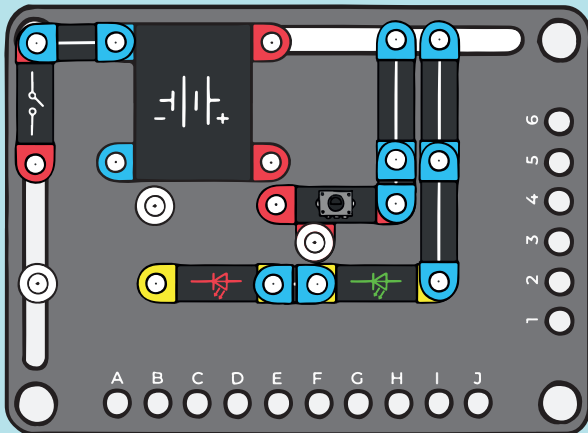
2x LED



1x resistor 1kΩ

Two LEDs in series with a potentiometer connected in parallel. Use the slider to set the voltage between the LEDs. The build behaves visually as L210, but now you do not control the current through the LEDs but, instead, control the current flow indirectly - by changing the voltage on the LEDs.

1.



2.

